

Split System Submittal Data



Building Life.

System: 36UHW72R

Indoor/Outdoor: UHW3672R/CH3672R

Concealed Duct Heat Pump

Job Name: _____
 Location: _____
 Engineer: _____
 Submitted to: _____
 Submitted by: _____
 Reference: _____

Approval: _____
 Date: _____
 Construction: _____
 Unit #: _____
 Drawing #: _____

General Data (at 230V)

Power	V/PH/Hz	230/208/1/60
Circuit Ampacity	(A)	15-35 Indoor-Outdoor
Fuse Size, Max.	(A)	15-35 Indoor-Outdoor

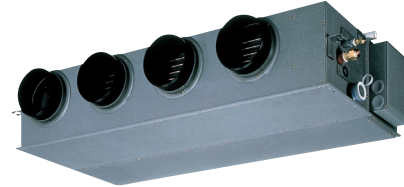
Compressor		DC Rotary
No. used		1
R.L. Amps - L.R.	(A)	16.4

Outdoor Unit		
Fan type		Propeller
Dia. (in.) - No. Speeds		18-7/64-1
Type Drive - No. Speeds		Direct - Inverter
No. Poles	(RPM)	8-830
No. Motors	(W)	1-90
CFM	(High)	1942
F.L. Amps	(A)	17.3

Coil Type		Aluminum Fin & Copper Pipe
Fin Type - Pipe Type		Slit Plate - Inner Rifled
Rows - F.P.I.		2-14.1
Face Area	(sq.ft.)	7.26
Tube Size	(in.)	3/8"

Indoor Unit		
Fan type		Centrifugal
Dia. & Length (in.) - No. Speeds		5-29/32-3
No. Speeds		3 & Auto
No. Poles	(RPM, High)	4-940
No. Motors	(W)	1-100
CFM	(Hi/Med/Lo)	1060/920/750
Indoor Sound Rating	(Hi) (dB-A)	38
F.L. Amps	(A)	1.0

Coil Type		Aluminum Plate Fin & Copper Tube
Fin Type - Pipe Type		Slit Plate - Inner Rifled
Rows - F.P.I.		3-12.7
Face Area	(sq.ft.)	3.32
Tube Size	(in.)	3/8"
Drain Connection Size		Max. head 2-33/64in. above drain connection (1-17/64)



Refrigerant		R410A
Lbs. - R410a (outdoor unit)		6.17
Control		Electric Expansion Valve
Connection		Flare
Line Length, Max (ft.)		165
Lift Difference, Max (ft.)		50 (Outdoor lower), 100 (Outdoor higher)
Line Size	(in. O.D. Discharge)	3/8"
Line Size	(in. O.D. Suction)	5/8"

Dimensions	(in.)	H x W x D
Indoor Unit	(Uncrated)	12-7/32 x 58-9/32 x 24-13/16
	(Crated)	14-3/32 x 65-25/32 x 30-13/16
Outdoor Unit	(Uncrated)	30-23/32 x 37 x 13-3/8
	(Crated)	34-31/32 x 39-31/32 x 16-3/32

Weight		Indoor	Outdoor
Net	(lbs.)	104	143
Shipping	(lbs.)	115	161
Shipping Volume	(cu.ft.)	16.5	13.0

Performance Data @ ARI Standard Conditions (230/208V)

Cooling		
Total Capacity	(BTU/H)	31,200 (9,500-31,200)
Sensible Capacity	(BTU/H)	19,570
Latent Capacity	(BTU/H)	11,630
SEER		14.9
Dehumidification	(Pints/H)	10.0
Amps	(A)	18.6/20.6
Power Inputs	(W)	3,920/3,920
Outdoor Sound Rating	(dB-A)	52

Heating		
Total Capacity	(BTU/H)	36,200 (8,000-36,200)
HSPF		8.7

