

**SUBMITTAL DATA: PLA-A12BA .....12,000 BTU/H CEILING CASSETTE UNIT FOR MXZ-B MULTI-ZONE HEAT-PUMP SYSTEMS**

Job Name:	Location:	Date:
Purchaser:	Engineer:	
Submitted to:	For <input type="checkbox"/> Reference <input type="checkbox"/> Approval <input type="checkbox"/> Construction	
System Designation:	Schedule No.:	

**GENERAL FEATURES**

- Compact side-discharge outdoor unit
- Quiet operation—indoor and outdoor units
- Built-in drain lift mechanism for condensate removal; lifts to 33-7/16"
- Wide air flow pattern for better air distribution
- Auto wave airflow in heating mode—unit independently cycles through horizontal and vertical positions for more even heat distribution
- Independent vane adjustment
- Automatic fan speed control
- Self-check function—integrated diagnostics
- Advanced microprocessor control
- Limited warranty: five years on parts and defects and seven years on compressors

**OPTIONAL ACCESSORIES**
**Indoor Unit**

- Multi-function Casement (PAC-SH53TM)
- Air Outlet Shutter Plates (PAC-SH51SP)
- High-efficiency (MERV 10) Filter (PAC-SH59KF)

**Controller Options**

- Wall-mounted Wired Remote Controller (PAR-21MAA)
- M-NET Adapter (PAC-SF81MA)
- CN51 Connector for Multiple Remote Controller Adapters/Duct Fan Controller (PAC-725AD)
- CN24 Relay Kit (CN24RELAY-KIT-CM)
- CN32 Connector for Remote On/Off (PAC-715AD)
- Remote Temperature Sensor (PAC-SE41TS)
- Remote Operation Adapter - Display and On/Off (PAC-SF40RM)
- Hand-held Wireless Remote Controller (PAR-FL32MA-E; req. PAR-FA32MA-E)
- Wireless Signal Receiver Module (PAR-FA32MA-E)
- i-see Sensor Corner Panel (PAC-SA1ME)
- Lockdown Bracket for Hand-held Controller (RCMKP1CB)
- Control/Service Tool (PAC-SK52ST)

**Cooling Capacity\*** ..... 12,000 Btu/h

**Heating Capacity at 47°F\*** ..... 14,000 Btu/h

\* Rating Conditions (Cooling) - Indoor: 80°F (27°C) DB, 67°F (19°C) WB; Outdoor: 95°F (35°C) DB, 75°F (24°C) WB.

(Heating at 47°F) - Indoor: 70°F (21°C) DB, 60°F (16°C) WB; Outdoor: 47°F (8°C) DB, 43°F (6°C) WB.

(For data on specific indoor units [all ducted, all non-ducted, and both ducted and non-ducted] combinations, see the Technical and Service Manuals.)

**Electrical Requirements**

Power Supply ..... 208 / 230V, 1-Phase, 60 Hz  
 MCA ..... 1 A



Indoor Unit: PLA-A12BA

**Voltage**

Indoor - Outdoor S1-S2 ..... AC 208 / 230V  
 Indoor - Outdoor S2-S3 ..... DC 24V

**Airflow (Lo - Med - Hi - Super Hi)**

Fan Motor ..... 0.51 F.L.A.

Airflow (Lo - M1 - M2 - Hi) ..... 390 - 420 - 460 - 530 Dry CFM  
 350 - 390 - 420 - 490 Wet CFM

Sound Level (Lo - M1 - M2 - Hi) ..... 27 - 28 - 29 - 31 dB(A)

DIMENSIONS	UNIT INCHES / MM	PANEL INCHES / MM
W	33-1/16 / 840	37-3/8 / 950
D	33-1/16 / 840	37-3/8 / 950
H	10-3/16 / 258	1-3/8 / 35

**Weight (Unit/Grille)**

lbs. .... 49 / 13

kg ..... 22 / 6

Field Drainpipe Size O.D. .... 1-1/4" / 32 mm

Refrigerant Type ..... R410A

Refrigerant Pipe Size O.D.

Gas Side ..... 1/2" / 12.7 mm

Liquid Side ..... 1/4" / 6.35 mm

Connection Method ..... Flared

**MXZ-B SERIES HEAT-PUMP OUTDOOR UNITS**

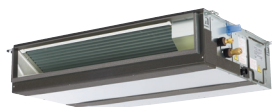

MULTI-ZONE OUTDOOR UNIT

**MXZ-B MULTI-ZONE SYSTEMS CAN INCLUDE:**

- Ducted Indoor Units:  
**SEZ-KD09,12,15,18NA, PEAD-A24AA**
  - Nonducted Indoor Units:  
**MSZ-GE06,09,12,15,18,24NA,  
 MSZ-FE09,12,18NA, MFZ-KA09,12,18NA,  
 PCA-A24KA, SLZ-KA09,12,15NA, and  
 PLA-A12,18,24BA**
  - A combination of both Ducted and Nonducted Indoor Units
- Refer to the separate submittal forms for the MSZ-GE, MSZ-FE, MFZ-KA, SEZ-KD, SLZ-KA, PEAD, PCA, PLA Indoor Units, and MXZ Outdoor Units.



MSZ-GE



SEZ and PEAD-A24AA



MSZ-FE



MFZ-KA



PCA-A24KA

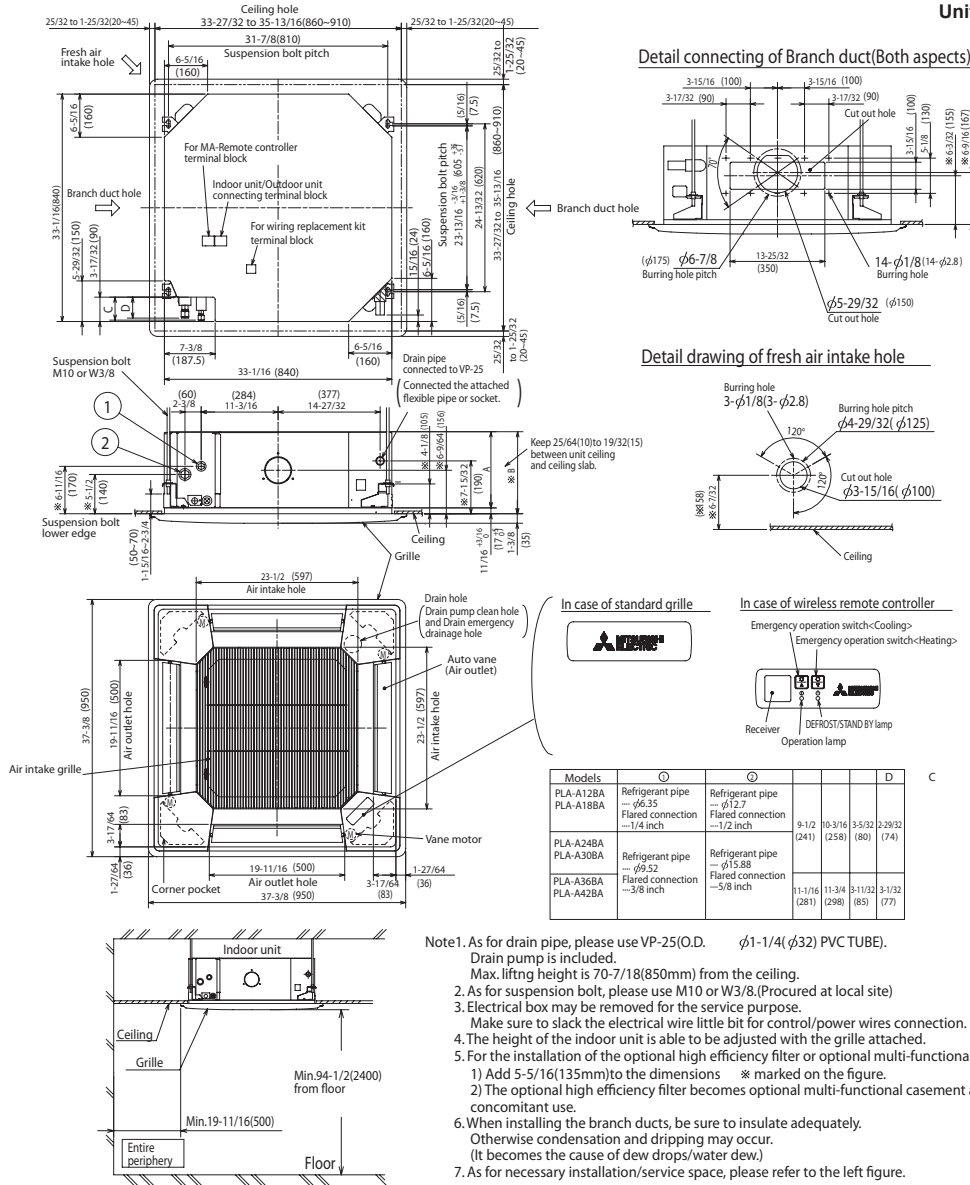


SLZ and PLA-A12,18,24BA



# DIMENSIONS: PLA-A12BA

Unit : inch(mm)



**Intertek**



3400 Lawrenceville Suwanee Rd  
 Suwanee, GA 30024  
 Tele: 678-376-2900 • Fax: 800-889-9904  
 Toll Free: 800-433-4822 (#3)  
 www.mehvac.com  
**Specifications are subject to change without notice.**