

SUBMITTAL DATA: MXZ-3A30NA
MULTI-INDOOR UNIT INVERTER HEAT-PUMP SYSTEM

Job Name: _____	Location: _____	Date: _____
Purchaser: _____	Engineer: _____	
Submitted to: _____	For <input type="checkbox"/> Reference <input type="checkbox"/> Approval <input type="checkbox"/> Construction	
Unit Designation: _____	Schedule No.: _____	

GENERAL FEATURES

- Limited warranty: one year on parts and defects and six years on compressor
- Compact side discharge outdoor unit
- Zone control
- Wireless remote controller
- Automatic fan speed control
- Quiet operation – both indoor and outdoor units
- Auto restart following a power outage
- Self check function – onboard diagnostics
- Advanced microprocessor control

Cooling

Rated capacity 28,400/(12,600 ~ 28,400) Btu/h
 SEER 16.0 Btu/h/W
 Power consumption 3,250/(1,000 ~ 3,250) W
 Power supply 208 / 230V, 1 Phase, 60 Hz

Heating

Rated capacity 28,600/(11,400 ~ 36,000) Btu/h
 Power consumption 2,180/(740 ~ 2,880) W
 HSPF (I/V) 10.0
 Weight (lbs/Kg) 158 / 72
 Field drain pipe size I.D. (inches/mm) 1/2 / 12.7
 Compressor DC inverter/twin rotary
 MCA 15
 Fan motor 0.93 F.L.A.
 Sound level 49 dB(A)

DIMENSIONS	INCHES	MM
inches	W	35-7/16
	D	12-19/32
	H	35-7/16

Weight (lbs/Kg) 128 / 58
 Refrigerant type R410A
 Refrigerant pipe size O.D. (inches/mm)
 gas side A: 1/2 / 12.7 B: 3/8 / 9.5
 liquid side 1/4 / 6.35
 Max. refrigerant pipe length (ft/m) 230 / 70
 Max. refrigerant pipe height difference (ft/m) 33 / 10
 Connection method flared



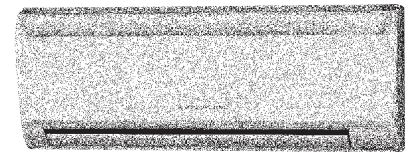
Remote Controller



Outdoor Unit: MXZ-3A30NA

INDOOR MODELS

- MSZ-A09NA**
 9,000 Btu/h Cooling
 10,900 Btu/h Heating
- MSZ-A12NA**
 12,000 Btu/h Cooling
 13,600 Btu/h Heating
- MSZ-A15NA**
 15,000 Btu/h Cooling
 18,000 Btu/h Heating
- MSZ-A17NA**
 16,200 Btu/h Cooling
 20,100 Btu/h Heating
- MSZ-A24NA**
 22,200 Btu/h Cooling
 23,200 Btu/h Heating


NOTES :

- *1. Rating conditions (cooling)-indoor : D.B. 80°F, W.B. 67°F
 outdoor : D.B. 95°F, W.B. 75°F
 *2. Rating conditions (heating)-indoor : D.B. 70°F, W.B. 60°F outdoor : D.B. 17°F, W.B. 15°F.

Operating range

		Indoor intake air temp.	Outdoor intake air temp.
Cooling	Maximum	D.B. 95°F, W.B. 71°F	D.B. 115°F
	Minimum	D.B. 67°F, W.B. 57°F	D.B. 14°F *
Heating	Maximum	D.B. 80°F, W.B. 67°F	D.B. 70°F, W.B. 59°F
	Minimum	D.B. 70°F, W.B. 60°F	D.B. 12°F, W.B. 10°F



Notes:

COOLING: MXZ-3A30NA

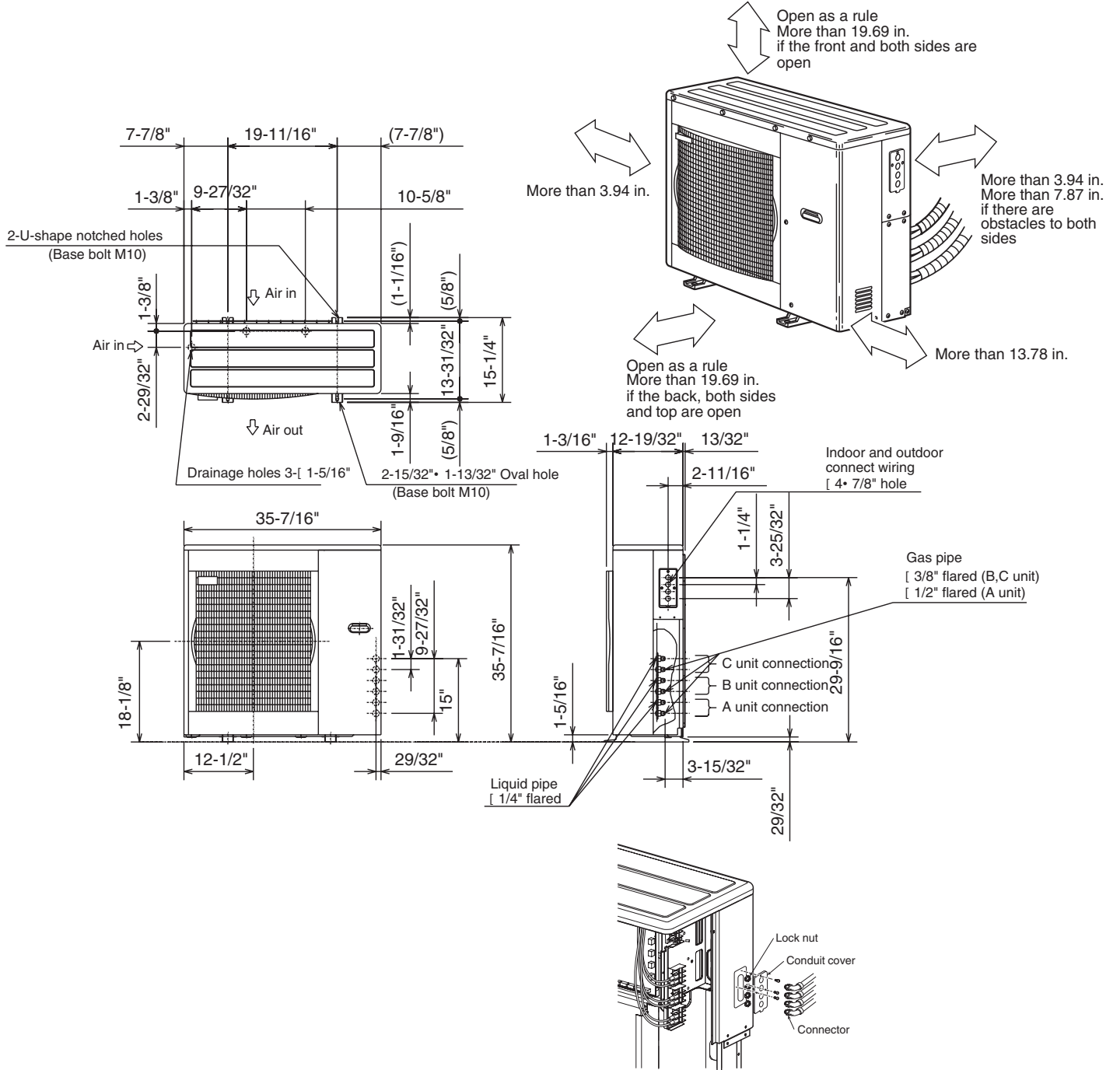
Indoor units combination	Cooling capacity (BTU/h)				Power consumption (W)	Current (A)		Power factor (%)
	Unit A	Unit B	Unit C	Total		208V	230V	
09	9,000	–	–	9,000 (7,200 ~ 9,000)	800 (650 ~ 800)	4.05	3.66	95
12	12,000	–	–	12,000 (7,200 ~ 12,000)	1,000 (650 ~ 1,000)	5.06	4.58	95
15	15,000	–	–	15,000 (7,200 ~ 15,000)	1,320 (650 ~ 1,320)	6.68	6.04	95
17	16,200	–	–	16,200 (7,200 ~ 16,200)	1,480 (650 ~ 1,480)	7.49	6.77	95
24	22,000	–	–	22,000 (7,200 ~ 22,000)	2,220 (650 ~ 2,200)	11.13	10.07	95
09+09	9,000	9,000	–	18,000 (12,000 ~ 18,000)	1,800 (920 ~ 1,800)	8.92	8.07	97
09+12	9,000	12,000	–	21,000 (12,000 ~ 21,000)	2,000 (920 ~ 2,000)	9.91	8.96	97
09+15	9,000	15,000	–	24,000 (12,000 ~ 24,000)	2,500 (920 ~ 2,500)	12.39	11.21	97
09+17	9,000	16,200	–	25,200 (12,000 ~ 25,200)	2,700 (920 ~ 2,700)	13.38	12.10	97
09+24	7,600	20,400	–	28,000 (12,000 ~ 28,000)	3,200 (920 ~ 3,200)	15.86	14.34	97
12+12	12,000	12,000	–	24,000 (12,000 ~ 24,000)	2,500 (920 ~ 2,500)	12.39	11.21	97
12+15	11,500	14,500	–	26,000 (12,000 ~ 26,000)	2,800 (920 ~ 2,800)	13.88	12.55	97
12+17	10,800	15,200	–	26,000 (12,000 ~ 26,000)	2,800 (920 ~ 2,800)	13.88	12.55	97
15+15	13,000	13,000	–	26,000 (12,000 ~ 26,000)	2,800 (920 ~ 2,800)	13.88	12.55	97
15+17	12,200	13,800	–	26,000 (12,000 ~ 26,000)	2,800 (920 ~ 2,800)	13.88	12.55	97
17+17	13,000	13,000	–	26,000 (12,000 ~ 26,000)	2,800 (920 ~ 2,800)	13.88	12.55	97
09+09+09	9,000	9,000	9,000	27,000 (12,600 ~ 27,000)	2,860 (1,000 ~ 2,850)	14.18	12.82	97
09+09+12	8,500	8,500	11,400	28,400 (12,600 ~ 28,400)	3,250 (1,000 ~ 3,250)	16.11	14.57	97
09+09+15	7,750	7,750	12,900	28,400 (12,600 ~ 28,400)	3,250 (1,000 ~ 3,250)	16.11	14.57	97
09+09+17	7,300	7,300	13,800	28,400 (12,600 ~ 28,400)	3,250 (1,000 ~ 3,250)	16.11	14.57	97

HEATING: MXZ-3A30NA

Indoor units combination	Heating capacity (BTU/h)				Power consumption (W)	Current (A)		Power factor (%)
	Unit A	Unit B	Unit C	Total		208V	230V	
09	10,900	–	–	10,900 (8,600 ~ 15,400)	1,100 (780 ~ 1,520)	5.57	5.03	95
12	13,600	–	–	13,600 (8,600 ~ 16,400)	1,380 (780 ~ 1,600)	6.98	6.32	95
15	18,000	–	–	18,000 (8,600 ~ 21,100)	1,940 (780 ~ 2,280)	9.82	8.88	95
17	20,100	–	–	20,100 (8,600 ~ 21,500)	2,240 (780 ~ 2,300)	11.34	10.25	95
24	23,200	–	–	23,200 (8,600 ~ 27,800)	2,520 (780 ~ 3,000)	12.75	11.53	95
09+09	10,900	10,900	–	21,800 (11,000 ~ 31,000)	1,700 (740 ~ 2,560)	8.43	7.62	97
09+12	10,900	13,600	–	24,500 (11,000 ~ 33,000)	1,980 (740 ~ 2,800)	9.81	8.87	97
09+15	10,100	16,900	–	27,000 (11,000 ~ 35,000)	2,200 (740 ~ 2,920)	10.90	9.86	97
09+17	9,300	17,700	–	27,000 (11,000 ~ 35,000)	2,200 (740 ~ 2,920)	10.90	9.86	97
09+24	7,300	19,700	–	27,000 (11,000 ~ 35,000)	1,980 (740 ~ 2,740)	9.81	8.87	97
12+12	13,500	13,500	–	27,000 (11,000 ~ 35,000)	2,200 (740 ~ 2,920)	10.90	9.86	97
12+15	12,000	15,000	–	27,000 (11,000 ~ 35,000)	2,160 (740 ~ 2,860)	10.71	9.68	97
12+17	11,200	15,800	–	27,000 (11,000 ~ 35,000)	2,140 (740 ~ 2,860)	10.61	9.59	97
15+15	13,500	13,500	–	27,000 (11,000 ~ 35,000)	2,120 (740 ~ 2,800)	10.51	9.50	97
15+17	12,700	14,300	–	27,000 (11,000 ~ 35,000)	2,110 (740 ~ 2,800)	10.46	9.46	97
17+17	13,500	13,500	–	27,000 (11,000 ~ 35,000)	2,100 (740 ~ 2,800)	10.41	9.41	97
09+09+09	9,500	9,500	9,500	28,500 (11,400 ~ 36,000)	2,180 (740 ~ 2,880)	10.80	9.77	97
09+09+12	8,600	8,600	11,400	28,600 (11,400 ~ 36,000)	2,180 (740 ~ 2,880)	10.80	9.77	97
09+09+15	7,800	7,800	13,000	28,600 (11,400 ~ 36,000)	2,180 (740 ~ 2,880)	10.80	9.77	97
09+09+17	7,350	7,350	13,900	28,600 (11,400 ~ 36,000)	2,180 (740 ~ 2,880)	10.80	9.77	97

DIMENSIONS: MXZ-3A30NA

REQUIRED SPACE



HVAC Advanced Products Division
Mitsubishi Electric & Electronics USA, Inc.

3400 Lawrenceville Suwanee Rd
Suwanee, GA 30024
Tele: 678-376-2900 • Fax: 800-889-9904
Toll Free: 800-433-4822 (#3)
www.mehvac.com