



# Multi Zone Specification

## ARU18RML Multizone Wall Mount

THE POSSIBILITIES ARE INFINITE

Job Name: \_\_\_\_\_  
 Location: \_\_\_\_\_  
 Engineer: \_\_\_\_\_  
 Submitted to: \_\_\_\_\_  
 Submitted by: \_\_\_\_\_  
 Reference: \_\_\_\_\_

Approval: \_\_\_\_\_  
 Date: \_\_\_\_\_  
 Construction: \_\_\_\_\_  
 Unit #: \_\_\_\_\_  
 Drawing #: \_\_\_\_\_

<b>Power</b>	V/Hz/P	230/60/1
<b>Fan type</b>		Forward Curve x 2
No. Motors	(W)	21-1
CFM [0 in.WG]	(Hi,Me,Lo)	494/412/377
CFM [0.16 in.WG]	(Hi,Me,Lo)	306/283/253
Sound Pressure Level	db (Hi,Me,Lo)	36/34/31
F.L.A.	(A)	.34
<b>Refrigerant</b>		410A
O.D. Discharge	in (mm)	Ø1/4" (6.35)
O.D. Suction	in (mm)	Ø1/2" (12.70)
<b>Dimensions</b>		H x W x D
Uncrated	(in)	8-35/64 x 37-1/64 x 23-1/2
	(mm)	(217 x 940 x 596)
Crated	(in)	12-3/4 x 42-5/16 x 27
	(mm)	(324 x 1075 x 686)
<b>Weight</b>		
Net	lbs. (kg)	55 (25)
Gross Shipping	lbs. (kg)	64 (29)

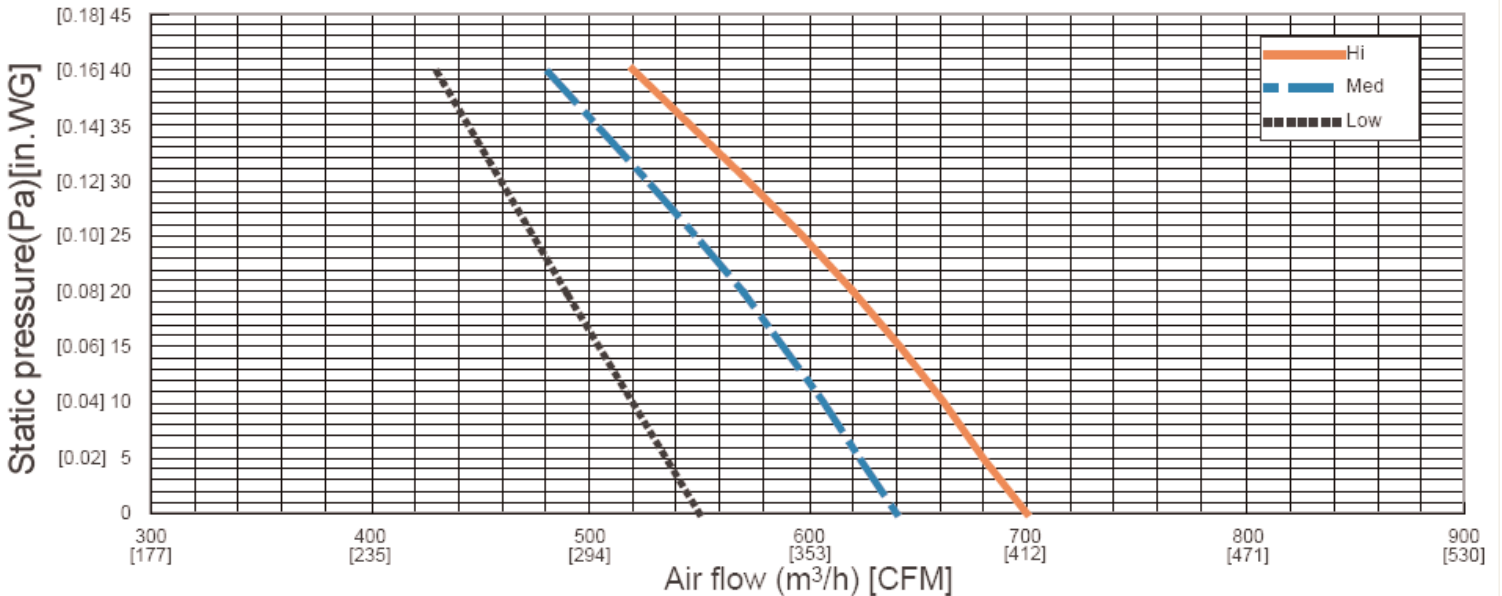
<b>Cooling Capacity</b>	(BTU/h)	17,800 (6,100-19,000)
<b>Moisture Removal</b>	pt/h (l/h)	3.4 (1.6)
<b>Heating Capacity</b>	(BTU/h)	20,500 (5,500-23,000)
<b>Temperature Setting Range</b>		
Cooling	°F(°C)	64~90 (18~32)
Heating	°F(°C)	60~80 (16~31)
<b>Drain Pipe Size**</b>	OD in (mm)	Ø1-1/32 (26)
	ID in (mm)	Ø27/32 (21.5)
<b>Remote Control Type</b>		Wired
<b>Electrical Connection*</b>	AWG	14/3 with ground

\*Power and communication are fed from the outdoor unit.

\*\*Adapter to 3/4" PVC included with unit.



Q-h Characteristic curve



Fujitsu General America, Inc.  
 Fairfield, NJ 07004  
 Toll Free: 1-888-888-3424  
 Fax: (973) 836-0447  
 www.fujitsugeneral.com

**Note:**

Specifications are based on the following conditions.

Power source of specifications : 230V

Cooling: Indoor temperature of 80°F(26.67°C)DB / 67°F(19.44°C)WB, and outdoor temperature of 95°F(35°C)DB/75°F(23.89°C)WB.

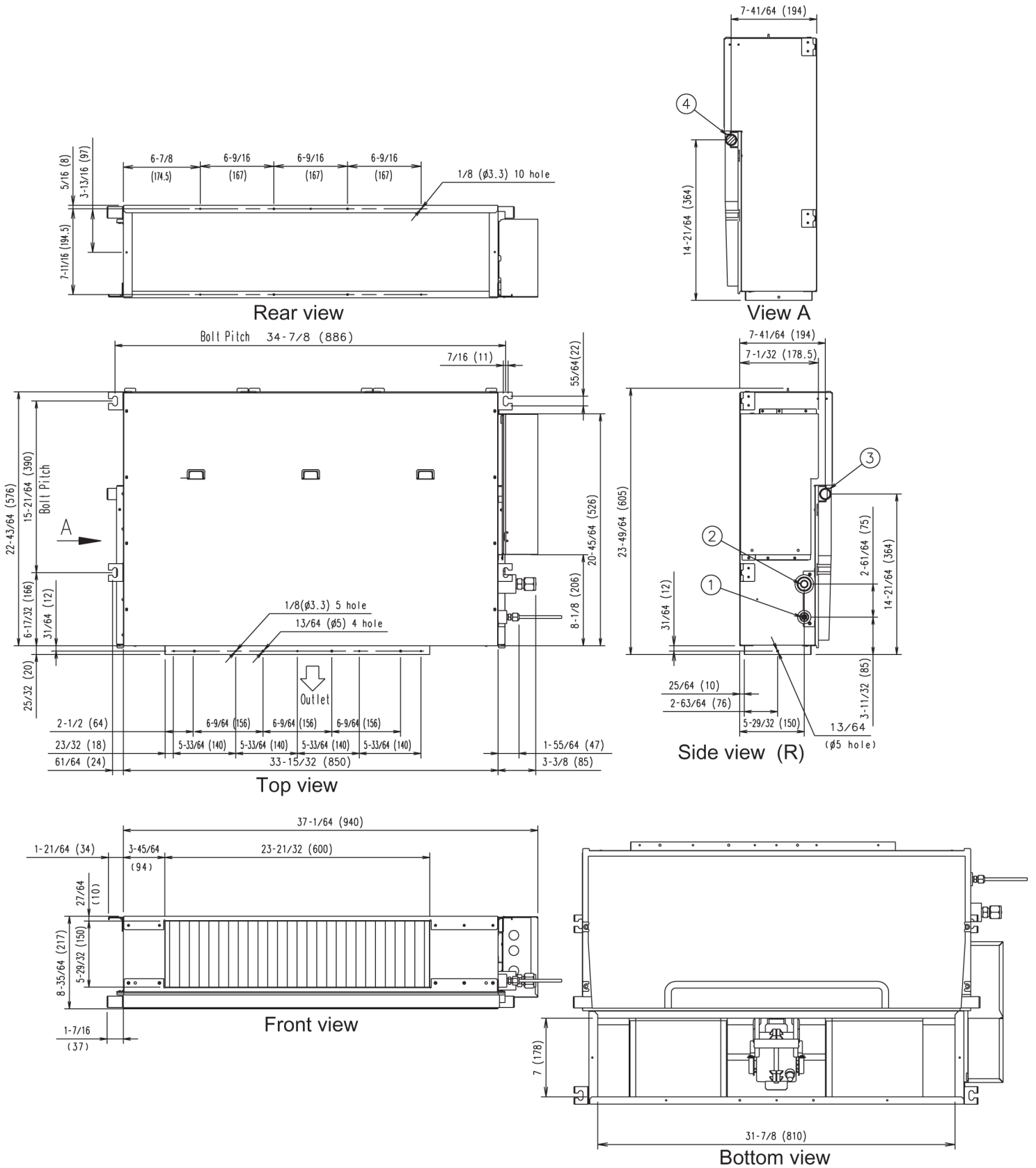
Heating: Indoor temperature of 70°F(21.11°C)DB / 60°F(15.56°C)WB, and outdoor temperature of 47°F(8.33°C)DB/43°F(6.11°C)WB.

Pipe length : 24ft. 7in.(7.5m),Height difference : 0 ft.(0m) [Outdoor unit - Indoor unit]

Fujitsu products are subject to continuous improvements. Fujitsu reserves the right to modify product design, specifications and information in this data sheet without notice and without incurring any obligations.

■ MODEL : ARU12R, ARU18R

[Unit : Inch(mm)]



- ① Refrigerant pipe flare connection (Liquid)
- ② Refrigerant pipe flare connection (Gas)
- ③④ Drain pipe connection