



Mitsubishi HVAC systems - Qualified for Tax credit

By PACIFIC HVAC Air conditioner – Tel 201-266-0049

Model	CAPACITY	SEER	EER	HSPF	Energy Star	TAX-CREDIT
-------	----------	------	-----	------	-------------	------------









Single Zone Air conditioner /Heat Pump

Wall mount MSY-GE09NA MUY-GE09NA	9,000 Btu	21	13.6	n/a	Yes	✓ 
Wall mount MSY-GE15NA MUY-GE15NA	14,000 Btu	21	13	n/a	Yes	✓ 
Wall mount MSZ-FE09NA MUZ-FD09NA	9,000 Btu	23	13.8	10	Yes	✓ 
Wall mount MSZ-FE12NA MUZ-FD12NA	12,000 Btu	22	12.5	10	Yes	✓ 
Wall mount MSZ-FE09NA MUZ-FE09NA	9,000 Btu	26	15.5	10	Yes	✓ 
Wall mount MSZ-FE12NA MUZ-FE12NA	12,000 Btu	23	12.9	10.5	Yes	✓ 
Wall mount MSZ-GE09NA MUZ-GE09NA	9,000 Btu	21	13.6	10	Yes	✓ 
Wall mount MSZ-GE12NA MUZ-GE12NA	12,000 Btu	20.25	12.5	10	Yes	✓ 
Wall mount MSZ-GE15NA MUZ-GE15NA	14,000 Btu	21	13	10	Yes	✓ 
Ducted unit SEZ-KD12NA SUZ-KA12NA	11,500 Btu	16	12.5	10	Yes	✓ 
Ducted unit SEZ-KD18NA SUZ-KA18NA	17,200 Btu	17.5	12.5	10	Yes	✓ 

Single Zone Continue Air conditioner /Heat Pump

Model	CAPACITY	SEER	EER	HSPF	Energy Star	TAX-CREDIT
Ceiling cassette PLA-A36BA PUZ-HA36NHA2	34,000 Btu	17	12.6	10	Yes	✓ 
Ceiling cassette PLA-A36BA4 PUZ-HA36NHA4	34,000 Btu	17	12.6	10	Yes	✓ 
Ducted unit PEA-A18AA (x2) PUZ-HA36NHA2	34,000 Btu	16.8	12.5	10.4	Yes	✓ 
Ducted unit PEA-A18AA (x2) PUZ-HA36NHA4	34,000 Btu	16.8	12.5	10.4	Yes	✓ 
Wall mount MSZ-FE09NA-8 MUZ-FE09NA-1	9,000 Btu	26	15.5	10	Yes	✓ 
Wall mount MSZ-FE12NA-8 MUZ-FE12NA1	12,000 Btu	23	12.9	10.5	Yes	✓ 
Wall mount MSZ-GE15NA-8 MUZ-GE15NA1	14,000 Btu	21	13	10	Yes	✓ 
Wall mount MSZ-FE18NA MUZ-FE18NA	18,000 Btu	20.2	14.1	10.5	Yes	✓ 
Wall mount MSZ-GE24NA MUZ-GE24NA	24,000 Btu	19	12.5	10	Yes	✓ 

Multi Zone Air conditioner /Heat Pump

Model	CAPACITY	SEER	EER	HSPF	Energy Star	TAX CREDIT
Wall mount MSZ-GE09NA (x2)	 20,000 Btu	18	12.5	8.9	Yes	
Outdoor MXZ-2B20NA						
Wall mount MSZ-GE06NA (x2) + MSZ-GE09NA	 22,000 Btu	17.5	12.5	9.3	Yes	
Outdoor MXZ-3B24NA						
Wall mount MSZ-GE06NA (x2) + MSZ-GE12NA	 22,000 Btu	17.5	12.5	9.3	Yes	
Outdoor MXZ-3B24NA						
Wall mount PKFY-P06NBMU-E2 (x2) + PKFY-P24NkMU-E2 (x2)	 60,000 Btu	16.7	12.5	10.6	Yes	
Outdoor PUMY-P60NKMU						

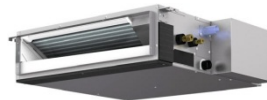
Outdoor



Wall Mount



Ducted unit



Ceiling Cassette



Pacific HVAC Air Conditioner

17 E Ivy Lane

Englewood, NJ 07631

www.pacificairconditioner.com

[You can find Additional information on Mitsubishi Electric web](#)